



Real Estate No Reserve

635 E. Williams Street
Danville, Ill.

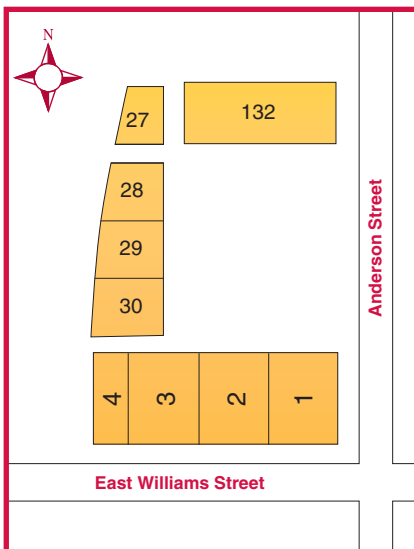
Selling at 2:00 pm

9 Parcels • Being Sold in 2 Lots Zoned I1 - Light Industrial

Approximately 255' Road Frontage on East William Street

Three Buildings, Show Room, Shop, Warehouse, 20x24 Garage, 20' Main Gate, 17' Rear Gate, Unfinished Apartment/Office above Show Room, Chain Linked Fence, Central Alarm System, Two furnaces

Closing to be in 30 days of Auction. 10% Nonrefundable down payment auction day. Buyer and Seller responsible for closing.



Disclaimer: Property being sold as is, no warranties or guarantees. In 1994 fuel tank storage was removed from property. Documentation of removal is available upon request.

Real Estate is being Sold Absolute. Property being sold As is Where is. Purchaser is required to make 10% Non Refundable Deposit Auction Day. Closing in 30 days between seller and buyer's attorneys.

For Legal Description, please contact

DSA's Office 765-778-9277

Be Prepared for 2 Rings!

Auctioneer: Cal Kaufman # 040000363

Sale Site Number: 217-442-4624 or 317-372-5201
after April 7th. Ask For Barry McCorkle



Directions:
Interstate 74 W to Exit 26 (Bowman Ave.) Go North on Bowman 1.3 Miles to E. Williams St. Turn Left, Go 1/2 Mile to Auction Site on the Right. *If you cross the Railroad Tracks you went too far!* Parking is limited, please park along side streets.

DSA

Don Smock Auction Co., Inc.
6531 S. St. Rd. 13
Pendleton, IN 46064

Absolute Rental & Real Estate Auction

April 17, 2010 at 9:00 am CST

VERMILION RENTAL, INC.

635 E. Williams Street Danville, IL 61832



FIRST CLASS
PRESORT
U.S. POSTAGE
PAID
PERMIT 14
CARMEL, IN

DSA

Don Smock Auction Co., Inc.

6531 S. State Road 13, Pendleton, IN 46064

(765) 778-9277 • Fax: (765) 778-9276

www.dsaauctions.com

Absolute Rental & Real Estate Auction

April 17, 2010 @ 9:00 am CST VERMILION RENTAL, INC. 635 E. Williams Street Danville, IL 61832

After 35 successful years in the Rental Business, Mr. Stonebreak has decided to retire and sell everything at an absolute auction. A large portion of the equipment was purchased new.

Equipment: (2) Case 580L Series II Backhoe, 2 WD, Cab, (2) '95 Terramite T5C Mini Backhoe, Kohler Gas, 2,460 & 2,485 Hrs, Kubota KX91-2 Mini Excavator, Canopy, Plumbed, 1,894 Hrs, Kubota L4310D HST Utility Tractor, 4x4, PTO, 1,481 Hrs, LA681 Quick Back Loader, Case 1194 Tractor, 3PT, PTO, Diesel, 6' Bushog, Modern 74" Box Grader w/Scarifier, Gill Super 6' Pulverizer, (2) 3 PT Augers, with 8", 12" & 18" Auger Bits, Lift-It 5022-6 Forklift, 6000#, Diesel, Hyster 6000# Fork Lift, 6' Steel Cage for Forklift, (2) Thomas T103S Skid Loaders, 1,688 & 2,013 Hrs, Kubota Diesel, Thomas T83S Skid Loader, 1,230 Hrs, Kubota Diesel, Thomas HH300 Breaker, Ditch Witch 3500 Trencher, 951 Hrs, Ditch Witch 1820 & 1230H Walk behind Trenchers, Morbark 175 Wood Chipper, 24 HP Honda Gas, Electric Start, (2) Lumber Jax Vertical Log Splitter, Honda 8.0HP, Vermeer SL502 Stump Grinder, Perkins Diesel, 1343 Hrs, '92 Boss 2 Light Plant, w/Honda Wacker Gas Generator, 2.5KW, Bil Jax XLB 4725A Boom Lift, Honda Gas, 994 Hrs, '97 Unilift 538 Electric Boom Lift, (2) Skyjack SSJII3220 Electric Scissor Lift, (3) Unilift LX2033 Electric Scissor Lifts, Workforce XLS2020 Electric Scissor Lift, (2) Bil-Jax Cougar XLT 2400 Electric Lift, Genie SL18 Super Lift, Hi-Jack Model a Lift.

Trucks & Trailers: '92 Ford F150 Pickup, '94 Chevrolet 2500 Pickup, '86 Ford F350 Dually Flatbed Truck, '02 Pronovost Dump Trailer, '00 Workforce Crank Up Trailer, '99 Bil-Jax Hydra Lift Trailer, '77 Custom G-9BT 8'x22' Gooseneck Trailer, '93 Trail King 6'x12' Trailer, Tandem Axle, '87 Crown Car Trailer, Tandem Axle, '80 Demo 6'x14' Car Trailer, Tandem Axle, (5) Single Trailers, (5) Enclosed Trailers and (5) Tilt Top Trailers,

Welders/Generators: (3) Miller Big 20 Welders, Gas, Portable, (2) Multiquip TLW300SS Whisper Welder/Generators, 1,397 & 1,347 Hrs, Hobart Wire Welder, Airco 225 Arc Welder, Miller Matic 200 Wire Feed, Miller Thunderbolt 220 AMP. Miller Spectrum 300 Plasma Cutter

Air Compressors: (2) Sulliar 300 A/C, (3) Multiquip DPS-90SST A/C, 3,195, 4,136 & 4,091 Hrs, (3) '95 Atlas Copco XAS55 A/C, 1,742, 1,759 & 2,157 Hours, (2) '97 Atlas Copco XAS90 A/C, 1,764 & 2,509 Hrs, Wacker G3.7, GS6.5 & GS3.7 Generators, (2) Honda EW171 Welder Generators, (2) 2500 Watt Generators **Concrete Equipment:** Miller Scoot Crete MB16, (2) Stone 655PM Mortar Mixers, Stone 855PM Mortar Mixer, Target Pac IV Concrete Saw (3) Whiteman 14" Trowel Machines, Target Pac 111 14" Concrete Saws, Target Econoline II 20" Concrete Saw, 14" Walk Behind Concrete Saw, (3) Concrete Vibrators, Several



Cut Off Saws, Various New & Used Diamond Concrete Saw Blades, Georgia Buggies, Target Porta Masonry Saw, Buckets of Form Stakes, (2) Stake Pullers, Bull Floats, (2) Concrete Seamers, Concrete Edger, Arrow Hart 6808 Concrete Floor Grinder **Bil-Jax Scaffolding:** 6' Steel Walk Boards, 14' x 16' Aluminum Walk Boards, Bil-Jax

Multi Purpose Braces, (12) Bil-Jax Platforms, (4) Pairs of Green Bull 14" Plank Supports, Werner 4154 Tube Work Platform **Lawn & Garden:** Aerators, Sod Cutters, Walk Behind Power Rakes, Honda F210 Roto-Tiller, (2) Honda F501 Roto-Tillers, Encore 55E100 Walk Behind Cable Trencher, Edco Walk Behind Cable Trencher, (2) Honda Rear Tine Tiller, Billy Goat Vacuum, Lawn Mowers, Pull Type Yard Rollers, (2) Hedge Trimmers, (3) Ground Hog Post Hole Diggers, Tow Behind Auger, 6"-12" Auger Bits, Snapper Riding Lawn Mower, Several Seeders, Weed Sprayers, **Compaction:**

Stone Wolf Pac 3100 Double Drum Roller, 728 Hrs, (3) Stone SR2500B 1 Ton Double Drum Rollers, Wacker VPA1750 Reversible Plate Compactor, (2) Wacker VPG165A Reversible Plate Compactors, (2) Wacker BPU2440A Plate Compactors, (2) Stone VR15R Jumping Jacks. **Ladders, Carpet & Floor Equipment, Auto Repair, Heaters, Wheel Dollies and Various:** Harper Deweze Straw Blower, Intec Force 1

Insulation Machine, Rigid 1215 & 300-T2 Pipe Threaders, (3) Industrial Coffee Pots, Electric Typewriter, Approx. Rotary Sanding pads, 80 to 220 Grit, Graphotype Machine, Vers-A-Stripper Parking Lot Marker & Paint, (2) Sod Kickers, Several Tile Cutters, Log Roller, 10' Aluminum Brake, Jet Engine Stands, 9' Fork Extensions, (2) Pallet Jacks, Texaco Fuel Pump, (6) Jet 2 Ton Chain Fall, Industrial Fans, Chain Link Fence, 4' Snow Blade, Thermtron Agitator, Several Wheelbarrows, Basement Jack Stands, (2) Solo 651 Chainsaws, Various Cleaning Chemicals, Metal detector, Measuring Wheels, Levels, Bar Clamps, Square Buff Sand Master Vibrating Sander, Hammer Drills, Angle Grinders, Bolt Down Core Drills, Core Bits, 2" to 10", Zontec Ozone Machine, Various Nailers, Air, Floor Strike, Under layment & Pneumatic along with Jab and Toilet Snakes, Box lock & Staples, Hammer Tackers, Manual & Electric Sink Snakes, Kinetic Water Ram, Sand-All Sandblaster, Refrigeration Vac Pump, Refrigerant Gauges, Paint Sprayers, LCI 431 Laser Levels with Tri-Pods, David White Auto Laser 651 Level with Tri-Pod, David White Transits, Flood Lights with Stands, Air Compressors, Honda EZ 2500 Generator, Suction Cup Glass Handles, Minipau Brick Buster, Wallpaper Steamers, (18) 16" & 14" Abrasive Blades,

Saws of all types, Miter, Circular, Hole, Cordless and Table, Tile and Table, Brute Electric Jack Hammers, Roofing Shovels, Linoleum Rollers, Landa Hot Water High Pressure Cleaner, Pressure Washers, Little Giant Ladder and Work Platform, Roof Jacks, Various Water, Trash, Sump and Transfer Pumps, Floor Magnets, (2) Dry Wall Carts, 3 Step Roll Around Ladder, Dry Wall Jacks, Many different types of Jacks, 1 Ton to 20, Choker Cables, High Lift Jacks, Grip Puller, Pipe Threaders, Electric & Manual, Dies and Benders, Pipe De-Burrer, Pipe Vise, Tamper, Bolt Cutters, Cable Come-A-Longs, Cable/Rope Pulley with Hook, Conduit Benders, Porta-Power, Assorted Hammer Drill Bits, Assorted Demo Hammer Bits, Milwaukee Hole Hog,



Deluxe Hinge Butt Template, Router, Hammer Drills, Electric Drills, Angle Drills, Car Polishers, Grinders, Electric Disc Sander, Hand Planner, Demo Hammers, Rotary Hammers, Dry Wall Screw Guns, Electric Impacts, Electric Shears & Unishear, Nibbler, IR Air Impacts, Socket Set, Belt Sanders, Boxes of Sanding Belts, 40, 60, 100 Grit, Palm Sanders, 12 Ton Hydraulic Pipe Bender,

Mag. Drills, Assorted Jig Saw Blades, Assorted Sanding Disc, Grinding Blades, Abrasive Blades for Quickie Saw, 28' Shingle Ladder, Electric Sprayers for Texturing Ceiling, Broadcast Spreaders, Broadcast Dusters, Steel Post Drivers, Pole Hand Saw, Floor Scrapers, Pry Bars, Jamco 27 Cal. Ramsete with Loads & Nails, Assorted Fasteners, Bits for Rock Drill, Bearcat 151 Chipper/Shredder, Electric, Extension Cords, Acetylene Torch Hose, Jumper Cables, Welding Leads, Welding Extension Cords, Transmission Jacks, Asbestos Siding Cutter, Chain & Binders, Manual Post Hole Digger, Pick Axes, Chain Saws, Electric Eel Sewer Snakes & Cable Link Cutters, 1/2" & 1" Air Hoses, Rock Drills, Air Chipping Hammers, Air Scalier, Air Tamper, 30#, 60# & 90# Jack Hammers, Air Rotary Hammers, Assorted Jack Hammer Bits, Wacker Jumping Jacks, Electric Tile Remover, Propane Weed Torches, (2) Tow Bars, (3) Concrete Come-A-Longs, (3) Jitter Bug, 4' Round Tables, Engine Hoists, Horco 20 Ton Shop Press, Drill Press, Bench Grinder, Bolt Bin, Air Tire Changer, Battery Charger, Work Bench and Vise, Power Rake, Gas, Parts Washer, (6) Tier Carousel Type Bolt Bin, Warehouse Scales, Tile Scrapers, Fireproof Cabinet, (3) Electric Motors, Miscellaneous Honda Motor Parts, Heater Parts & Power Tool Parts, Stair Climbing Dolly, (12) Sets of Parts Shelves and Contents, Racks of Assorted Belts, Assorted Files, Wrenches, Hammers, Sockets and Assorted Shop Tools.

CONDITIONS OF AUCTION

BIDDERS are required to register and are encouraged to fully examine all items before bidding.

PAYMENT (in U.S. Funds) may be made by Cash, Cashiers or Certified Checks, Personal and Company checks must have current bank letter guaranteeing funds

SETTLEMENT must be made on sale day or at anytime during the sale. No Property may be removed from premises before making settlement.

EACH ITEM in the auction is being sold as is, where is, without warranty or guarantee of any kind, including merchantability or fitness for particular purposes. Each item is the sole responsibility of the purchaser from the moment the item is sold.

NOT RESPONSIBLE in case of accident or for items after sold. Auction Company and owner will take reasonable care to safeguard purchased items, but purchaser shall not rely thereon.

BUYERS PREMIUM: 1% on each item \$2501.00 and greater, 10% on each item \$2500.00 and less **SALES TAX:** We will be collecting 7% sales tax on all items.

